



One Care Newsletter

Bringing Colour to Your Care

WHAT'S INSIDE

Welcome to our first
ever newsletter

2

Max the wonder dog:
a howling success

3

Take a break! Stop. Relax...

4

Assistance dogs for people
with autism

6

One Care Support Services at the
Disability, Ageing and Lifestyle
Expo 2023

7

Technological advancements in
disability care

8



One Care Support Services' new colours on show at the Disability, Ageing and Lifestyle Expo 2023

Eye-popping splashes of colour electrified our stand at the 2023 Disability and Aged Care Expo. Visitors were attracted by the variety of merchandise and information materials on display. The panorama of sensational colour generated wonderful

energy among our staff who were eager to engage with passers-by pausing to look, and then chat further, about One Care Support Services, now beautifully wrapped in its dashing new corporate livery. Reports are that the jellybeans and lollypops were

an irresistible temptation for many, adding to the liveliness and fresh appeal of our fabulous booth.

EDITORIAL

Welcome to our first ever newsletter

A message from One Care Support Services Manager Sara O’Neil



Dear residents, staff, family, friends and supporters,

I hope this message finds you well. It is with great pleasure and excitement that I extend a warm welcome to you for the first edition of our newsletter designed exclusively for the incredible residents, their families, the dedicated staff of our disability support service, our Government funders, suppliers, and supporters.

At One Care Support Services, we believe in fostering a sense of community, open communication, and a supportive environment for all. As we embark on this journey together, we aim to create a place that shares important updates, and which celebrates the achievements, stories, and milestones of our vibrant community.

In these pages, you’ll find a diverse range of content catering to the interests and needs of all who have an affinity with those living with a disability. Whether it’s heartwarming success stories, informative articles about disability-related topics, or upcoming events, we will strive to make this newsletter a reflection of the unique and wonderful community we have built together.

.....
“It was Francis Bacon who once said: ‘We rise to great heights by a winding staircase of small steps’. At One Care Support Services, there are many staircases open to you.”
.....

This is your newsletter and we want to fill it with interesting stories from you and about you. It will also

carry specially prepared articles of particular interest to our readers, such as decisions by government affecting people living with all forms of disability, and stories celebrating success in the face of adversity. We will also include items about people who might be struggling, but for whom hope remains a lifeforce.

Thank you for being an integral part of our community. We look forward to bringing you stories that inspire, inform, and celebrate the diversity and the strengths that define us.

With gratitude,

Sara O.
Manager,
One Care Support Services



LOCAL CELEBRITY

Max the wonder dog: a howling success

Cuddling a furry companion can help chase away the blues, and now science is proving its worth

Max the Wonder Dog is bow wowing exclusive audiences in Adelaide’s western suburbs bringing smiles and contagious gleeful moments on tours of residential support homes run by One Care Support Services.

Residents and visitors are entranced by the antics of Max whose ancestry could be linked to a distant canine relative in the Great Moscow Circus. Of mixed origins, but with a generous helping of cappuccino-coloured Chihuahua, Max is unquestionably an adored pin-up item for staff and residents.

Of indeterminate gender, Max is not giving interviews, but daily shows in appearances at One Care support homes in West Croyden and Woodville West speak for themselves.

.....
“It has been said that the difference between friends and pets is that friends we allow into our company, but pets we invite into our solitude.”
.....

Accompanied by Chief Minder and One Care Licensed Manager Sara O. on her daily rounds, Max is always out front scouting the

tilled corridors for signs of a gentle pat from a delighted resident or a friendly hullo as the official party maintains a brisk pace chatting to care staff along the way and attending to the multitude of tasks needed to keep the establishment performing at optimum efficiency.

Max’s contribution to the health and wellbeing of people living in supported accommodation at each of One Care Support Services’ licensed facilities cannot be overstated. With big brown eyes, perky ears crowned with tufts of crème-coloured fur and a tail that is in perpetual motion, Max brings mirth, warmth, and love to all who catch a glimpse of the star of the show.

With a reserved seat at the Board table when the serious business of administering this registered NDIS provider is in session, Max manages to keep one watchful eye open while snoozing in case something might be missed.

Never to be caught napping, a quick call from Sara an hour later and Max springs from the chair, all four paws skidding through the Boardroom door in anticipation of another round of ‘walkies’, with a meet and greet likely on that morning’s agenda.

NEW AT ONE CARE

Take a break! Stop. Relax...

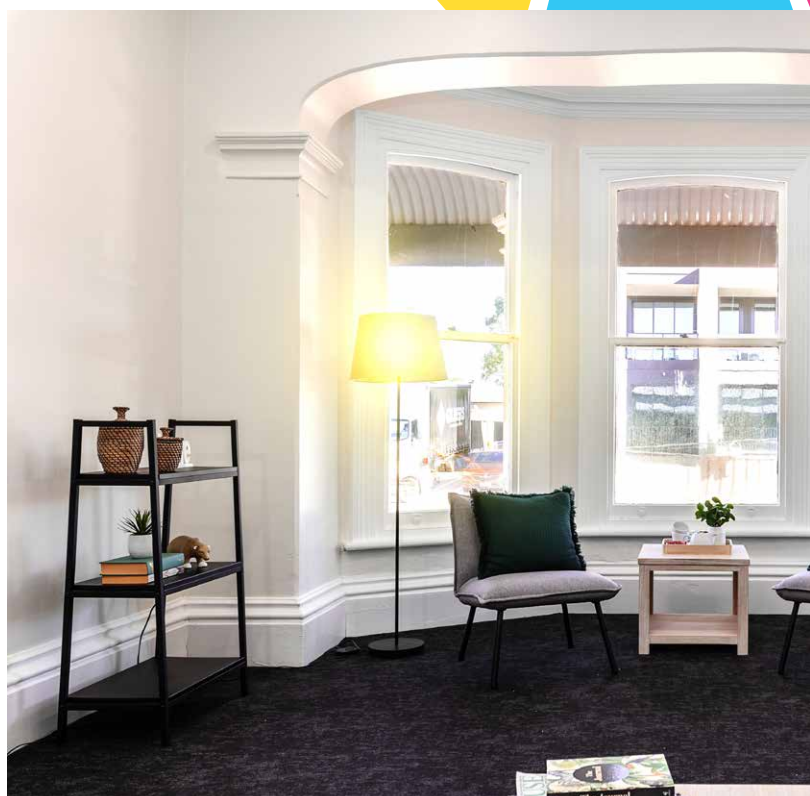


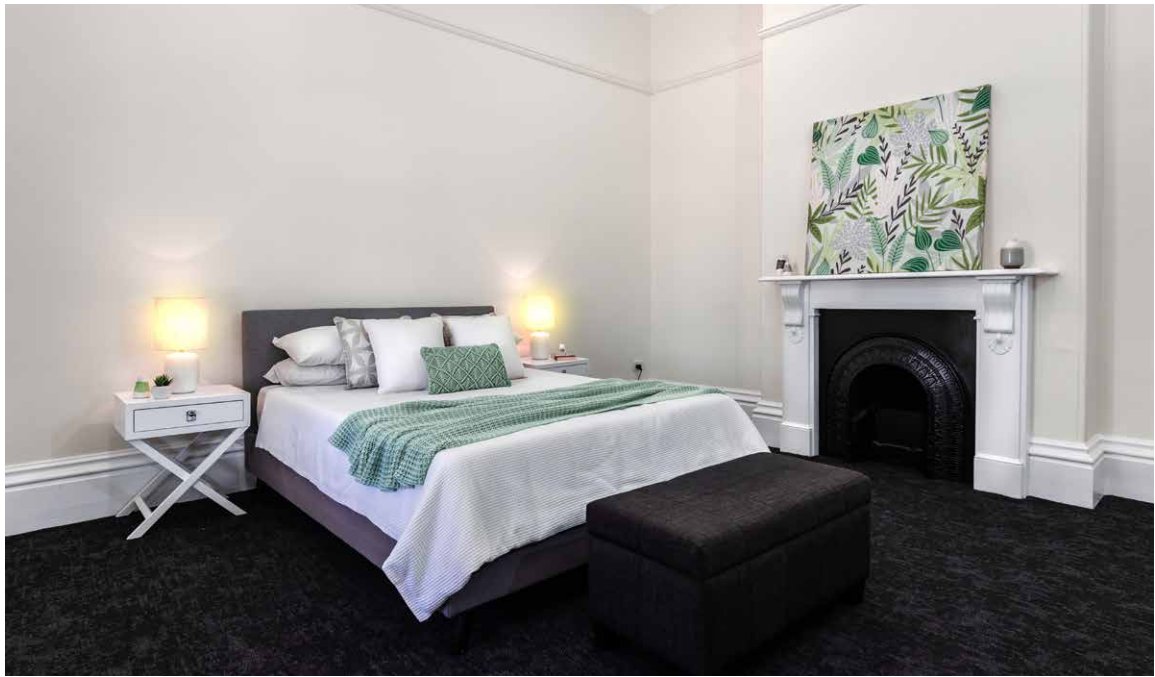
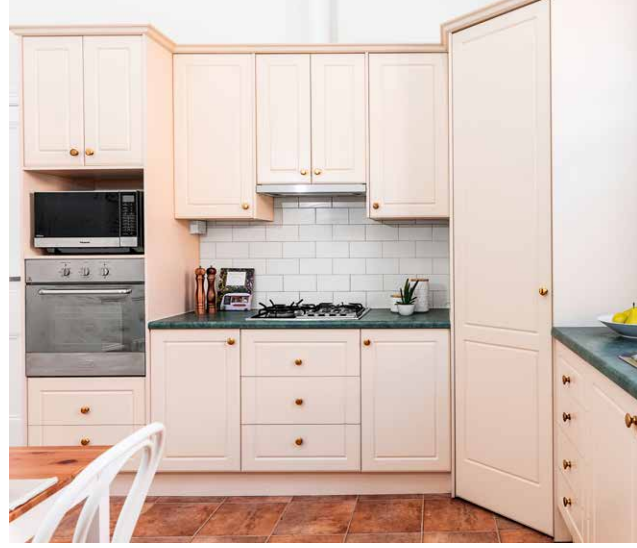
Enjoy the stillness One Care Support Services is now offering at its recently-renovated Short Term Accommodation in the peaceful surrounds of leafy Norwood.

Contentment can be yours at <https://onecaresupport.com.au/short-termaccomodationsta/>

Stay awhile. Hourly, overnight, day, weekend, holiday or longer.

We'll be there, waiting to welcome you.





Assistance dogs for people with autism

The NDIA's Research and Evaluation Branch has completed a comprehensive systematic review to understand the benefits of assistance dogs or pets for people with autism.



Assistance dogs have been specially trained by an accredited assistance animal provider to assist a person with disability do at least three things they wouldn't be able to do because of their disability. They are also trained to a high level of obedience to reliably support people with disability when out in the community.

What did the NDIS find?

It was found that parents had mixed experiences of assistance animals:

- Parents thought assistance dogs benefitted the child and family, including helping the child socially, with emotional regulation and decreasing stress for the parents. However, these seem to be the same benefits described by parents of children with autism with a pet dog
- Many parents were not prepared for the practicalities of owning an assistance dog such as the time, energy and dedication required to look after the dog's wellbeing

- Many parents reported being denied access to public places with the dog because of a lack of community awareness about autism and the role of assistance dogs.

It is likely that some individuals will respond well to animal-assisted supports. However, the evidence does not suggest that assistance dogs are more effective than pets. These findings will inform the development of guidelines about Assistance Animals and the NDIS.

The complete form of this article can be found here: <https://www.ndis.gov.au/about-us/research-and-evaluation/market-stewardship-and-employment/assistance-dogs-people-autism>

We support the

ndis

One Care Support Services at the Disability, Ageing and Lifestyle Expo 2023





INNOVATION AND TECHNOLOGY

Technological advancements in disability care



Advancements in technology are opening up unprecedented possibilities for improving the quality of care for individuals living with disabilities.

From smart devices to artificial intelligence, these innovations are life-changing.

Continuing research and development are critical to ensuring these innovations are accessible to all individuals with disabilities.

In future newsletters, we will delve deeper into specific technologies, share success stories, and explore the evolving landscape of disability care in our tech-driven world.



One Care
SUPPORT SERVICES

1-800-ONECARE
1-800-6632-273
admin@ocss.au
www.onecaresupport.com.au

BRINGING COLOUR TO YOUR CARE



At One Care Support Services we aim to provide expert care and support, and build trusted relationships that celebrate the difference of each resident and NDIS participant.

